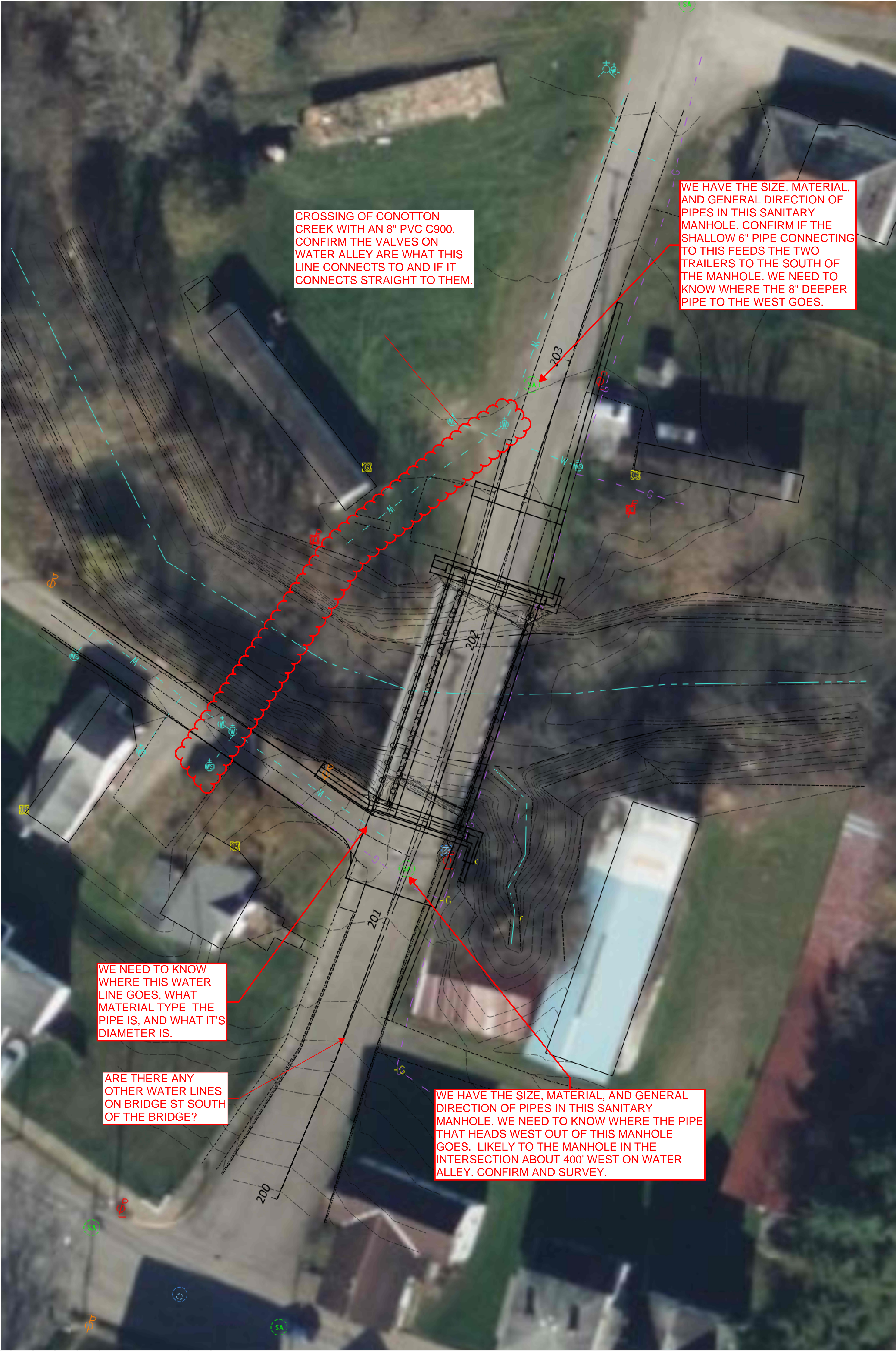


CTY-RTE-SECTION

MODEL: Plan 1 [Sheet] PAPERSIZE: 34x22 (in.) DATE: 6/3/2024 TIME: 3:58:21 PM USER: tadams
J:\20230339\ODOT\07_D11 Bridge St_Bowerston\120494\400-Engineering\Structures\SFN_3431790\EngData\06_ODOT Coordination\120494_SFN_3431790_SP001.dgn



CROSSING OF CONOTTON CREEK WITH AN 8" PVC C900. CONFIRM THE VALVES ON WATER ALLEY ARE WHAT THIS LINE CONNECTS TO AND IF IT CONNECTS STRAIGHT TO THEM.

WE HAVE THE SIZE, MATERIAL, AND GENERAL DIRECTION OF PIPES IN THIS SANITARY MANHOLE. CONFIRM IF THE SHALLOW 6" PIPE CONNECTING TO THIS FEEDS THE TWO TRAILERS TO THE SOUTH OF THE MANHOLE. WE NEED TO KNOW WHERE THE 8" DEEPER PIPE TO THE WEST GOES.

WE NEED TO KNOW WHERE THIS WATER LINE GOES, WHAT MATERIAL TYPE THE PIPE IS, AND WHAT IT'S DIAMETER IS.

ARE THERE ANY OTHER WATER LINES ON BRIDGE ST SOUTH OF THE BRIDGE?

WE HAVE THE SIZE, MATERIAL, AND GENERAL DIRECTION OF PIPES IN THIS SANITARY MANHOLE. WE NEED TO KNOW WHERE THE PIPE THAT HEADS WEST OUT OF THIS MANHOLE GOES. LIKELY TO THE MANHOLE IN THE INTERSECTION ABOUT 400' WEST ON WATER ALLEY. CONFIRM AND SURVEY.

SFN		0	
DESIGN AGENCY			
EMHT			
DESIGNER		CHECKER	
REVIEWER			
PROJECT ID			
SUBSET		TOTAL	
0		0	
SHEET		TOTAL	
P.O.		0	

UTILITY EXHIBIT
BRIDGE NO. HAS 00027 00045
OVER CONOTTON CREEK